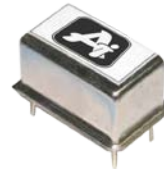




Features

- Stratum 3(Overall ± 4.6 ppm including 10 years aging.)
- Low phase noise.
- Fast warm-up.
- Application for Base station, SDH/SONET, RTC clock, Synthesizer , Digital switch , Test equipment, etc.



Electrical Specifications

Type		THRU-HOLE OCXO	
Output Type		HCMOS	
Output Load		15pF	
Output Frequency Range		10MHz~40MHz	
Output Wave Form		Rectangular	
Supply Voltage		3.3V /5.0V	
Operating Temperature Range		-30~+70°C, or specify	
Frequency Stability	Frequency Tolerance	± 0.2 ppm Max..	
	Vs. Temperature	± 0.2 ppm Max.	
	Vs. Supply Voltage	± 50 ppb Max.	
	Vs. Aging	Daily	± 5.0 ppb Max.
Yearly		± 0.5 ppm Max.	
10 years		± 3.0 ppm Max.	
0 Level Output Voltage (Max.)		10% VDD	
1 Level Output Voltage (Min.)		90% VDD	
Symmetry		45~55%	
Spurious		-60dBc	
Warm-up		± 0.1 ppm (In 2 minutes @ +25°C, referenced to 1 hour)	
Power Consumption (Steady state)		0.8W Max.	
Phase Noise	Offset 10Hz	-115dBc/Hz	
	Offset 100Hz	-140dBc/Hz	
	Offset 1kHz	-152dBc/Hz	
	Offset 10kHz	-154dBc/Hz	

Ordering Information

<u>KXDC</u>	<u>10000M</u>	<u>33</u>	<u>F</u>	
Product Code	Frequency Range 10.000MHz	Supply Voltage 33=3.3V	Operating Temperature	
			A=-20~70°C	D=-40-125°C
			B=-10~70°C	E=-10~60°C
			C=-40~85°C	F=-30~70°C

Dimension

Units:mm

