



DESCRIPTION

The RB751S-40 is available in SOD-523 Package

ORDERING INFORMATION

Package Type	Part Number
SOD-523	RB751S-40
Note	SPQ: 3,000pcs/Reel
AiT provides all RoHS Compliant Products	

FEATURES

- Small surface mounting type SC-79/SOD-523
- Low reverse current and low forward voltage.
- High reliability
- Available in SOD-523 Package

CONSTRUCTION

- Silicon epitaxial planar

PIN DESCRIPTION





ABSOLUTE MAXIMUM RATINGS

T_A = 25°C

V _{RM} , Peak Reverse Voltage	40V
V _R , DC Reverse Voltage	30V
I _O , Mean Rectifying Current	30mA
I _{FSM} , Peak Forward Surge Current	200mA
T _J , Junction Temperature	125°C
T _{STG} , Storage Temperature	-40°C~+125°C

Stresses above may cause permanent damage to the device. These are stress ratings only and functional operation of the device at these or any other conditions beyond those indicated in the Electrical Characteristics are not implied. Exposure to absolute maximum rating conditions for extended periods may affect device reliability.

ELECTRICAL CHARACTERISTICS

T_A = 25°C

Parameter	Symbol	Conditions	Min.	Typ.	Max.	Unit
Forward Voltage	V _F	I _F =1mA	-	-	0.37	V
Reverse Current	I _R	V _R =30V	-	-	0.5	μA
Capacitance Between Terminals	C _T	V _R =1V, f=1MHz	-	2.0	-	pF



ELECTRICAL CHARACTERISTIC CURVES

$T_A = 25^\circ\text{C}$

Figure 1. Forward characteristics

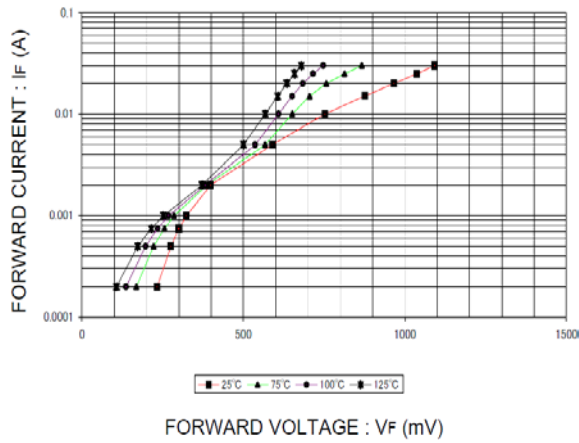


Figure 2. Reverse characteristics

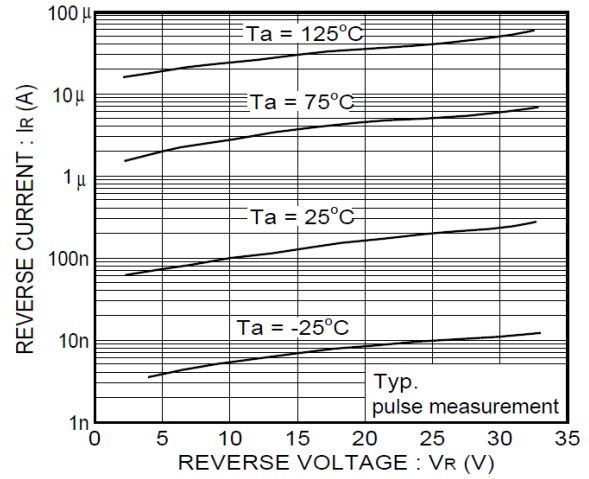
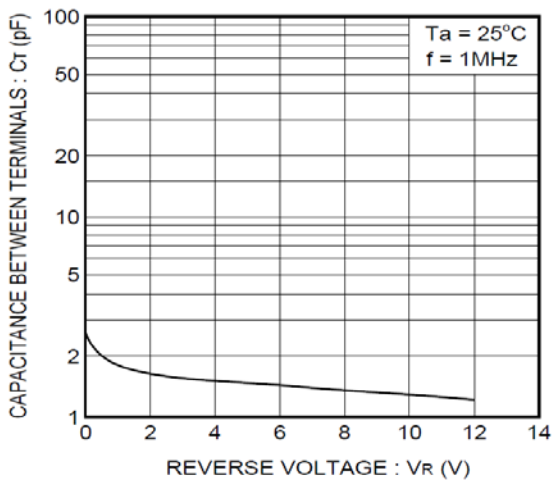


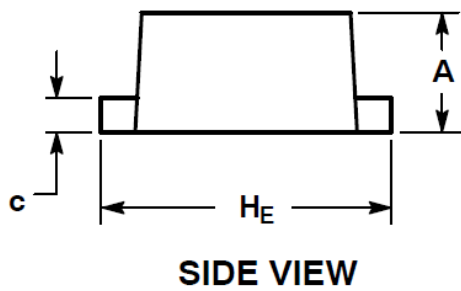
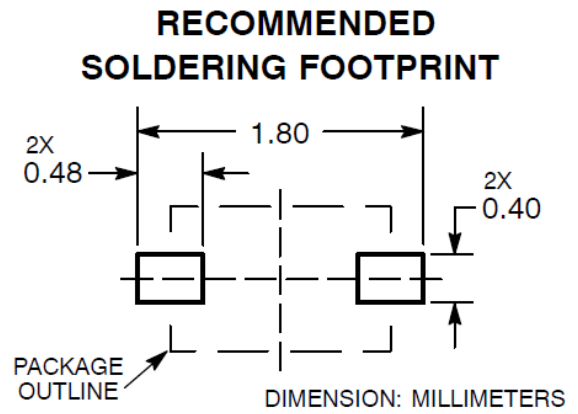
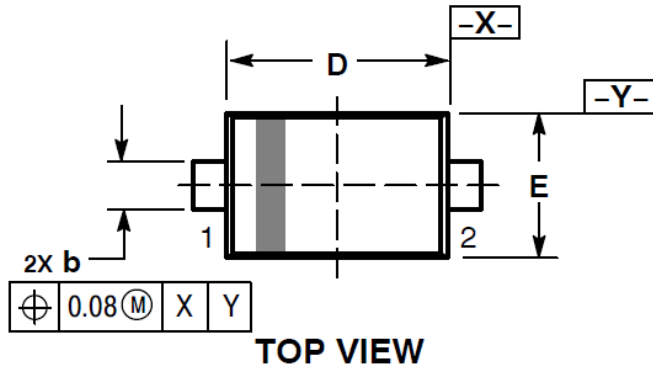
Figure 3. Capacitance between terminals characteristics





PACKAGE INFORMATION

Dimension in SOD-523 Package (Unit: mm)



DIM	MIN	MAX
A	0.50	0.70
b	0.25	0.35
c	0.07	0.20
D	1.10	1.30
E	0.70	0.90
H _E	1.50	1.70
L	0.30 REF	
L2	0.15	0.25



IMPORTANT NOTICE

AiT Components (AiT) reserves the right to make changes to any its product, specifications, to discontinue any integrated circuit product or service without notice, and advises its customers to obtain the latest version of relevant information to verify, before placing orders, that the information being relied on is current.

AiT Components' integrated circuit products are not designed, intended, authorized, or warranted to be suitable for use in life support applications, devices or systems or other critical applications. Use of AiT products in such applications is understood to be fully at the risk of the customer. As used herein may involve potential risks of death, personal injury, or server property, or environmental damage. In order to minimize risks associated with the customer's applications, the customer should provide adequate design and operating safeguards.

AiT Components assumes to no liability to customer product design or application support. AiT warrants the performance of its products of the specifications applicable at the time of sale.