



DESCRIPTION

The A6531 is designed for portable RF and wireless applications with demanding performance and space requirements. The voltage difference is low and the output current is large Because of the built-in low on state resistance transistor.

Built-in over-current protection, over temperature protection and short circuit protection, to make the load current not exceed the current capacity of the output transistor.

The A6531 supports high-voltage (30V) power supply and enable input, and adopts low-power design, which is suitable for some low-power applications

The A6531 is available in SOT-23, SOT-25, and SOT89-3 packages.

ORDERING INFORMATION

Package Type	Part Number	
SOT89-3 SPQ: 1,000pcs/Reel	K3	A6531K3R
		A6531K3VR
SOT-23 SPQ: 3,000pcs/Reel	E3	A6531E3R
		A6531E3VR
SOT-25 SPQ: 3,000pcs/Reel	E5	A6531E5R
		A6531E5VR
Note	V: Halogen free Package R: Tape & Reel	
AiT provides all RoHS products		

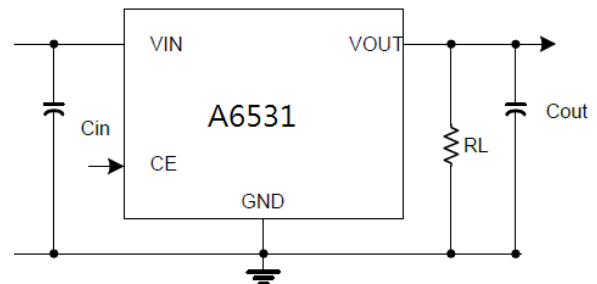
FEATURES

- High ripple rejection ratio : 50dB (1 kHz)
- Low current consumption : 5μA (TYP.)
- Standby current : <1uA
- Low input / output differential pressure : 300 mV typical value (Products with an output value of 3.0V, When I_{OUT}=100mA)
- Maximum output current : 500mA (V_{IN}≥V_{OUT}+1V)
- Over Current Protection
- Over Temperature Protection
- Short Circuit Protection

APPLICATION

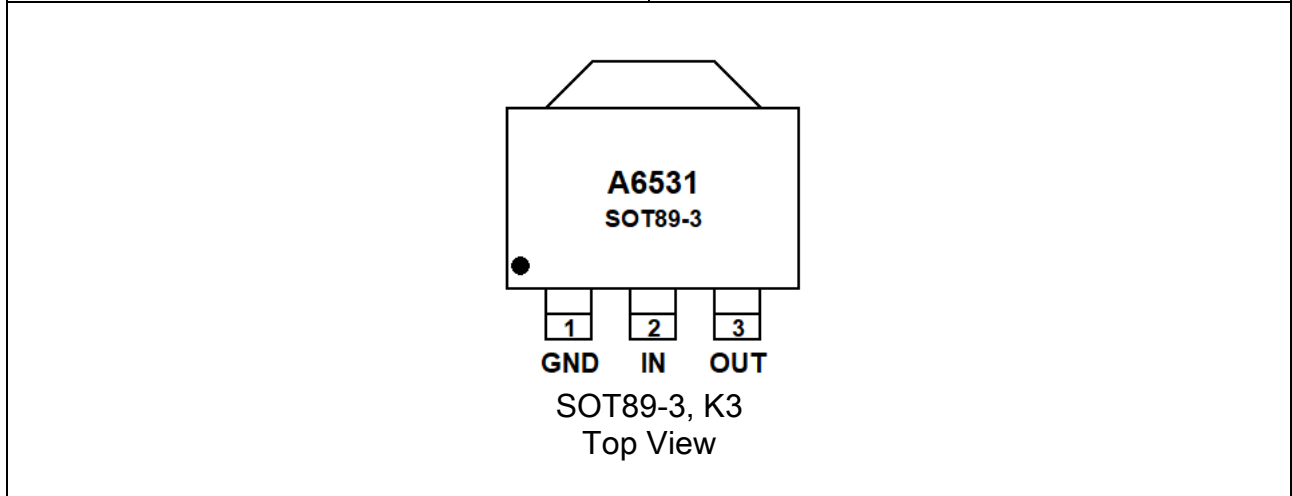
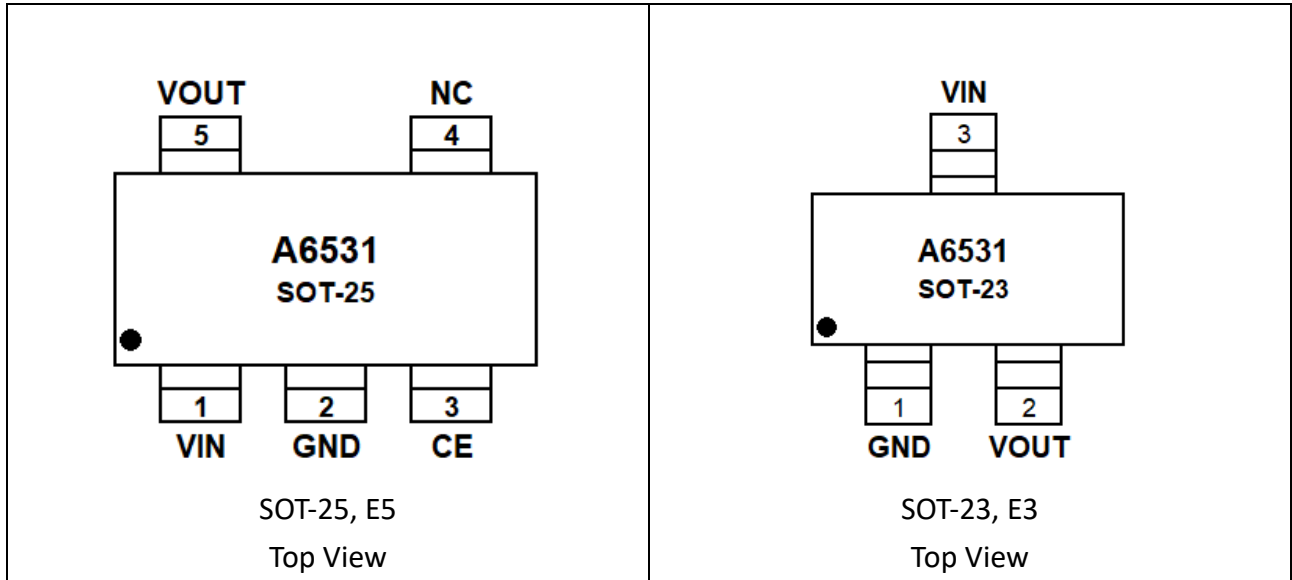
- Mobile phone
- Cordless telephone
- Camera, video recording equipment
- Portable game machine
- Portable AV device
- Voltage reference
- Battery powered system

TYPICAL APPLICATION





PIN DESCRIPTION



SOT-25	SOT89-3	SOT-23	Symbol	Function
1	2	3	V _{IN}	Input Voltage
2	1	1	GND	Ground
3	-	-	CE	Enable Pin
4	-	-	NC	Not connected
5	3	2	V _{OUT}	Output Voltage



ABSOLUTE MAXIMUM RATINGS

V _{IN} , Input Voltage	GND-0.3~GND+30V
V _{CE} , Enable voltage	GND-0.3~ V _{IN} +0.3V
V _{OUT} , Output voltage	GND-0.3 ~ 8V
T _{OPR} , Operating Ambient Temperature	-40 ~ +85°C
T _{STG} , Storage Temperature	-40 ~ +125°C

Stresses above may cause permanent damage to the device. These are stress ratings only and functional operation of the device at these or any other conditions beyond those indicated in the Electrical Characteristics are not implied. Exposure to absolute maximum rating conditions for extended periods may affect device reliability.

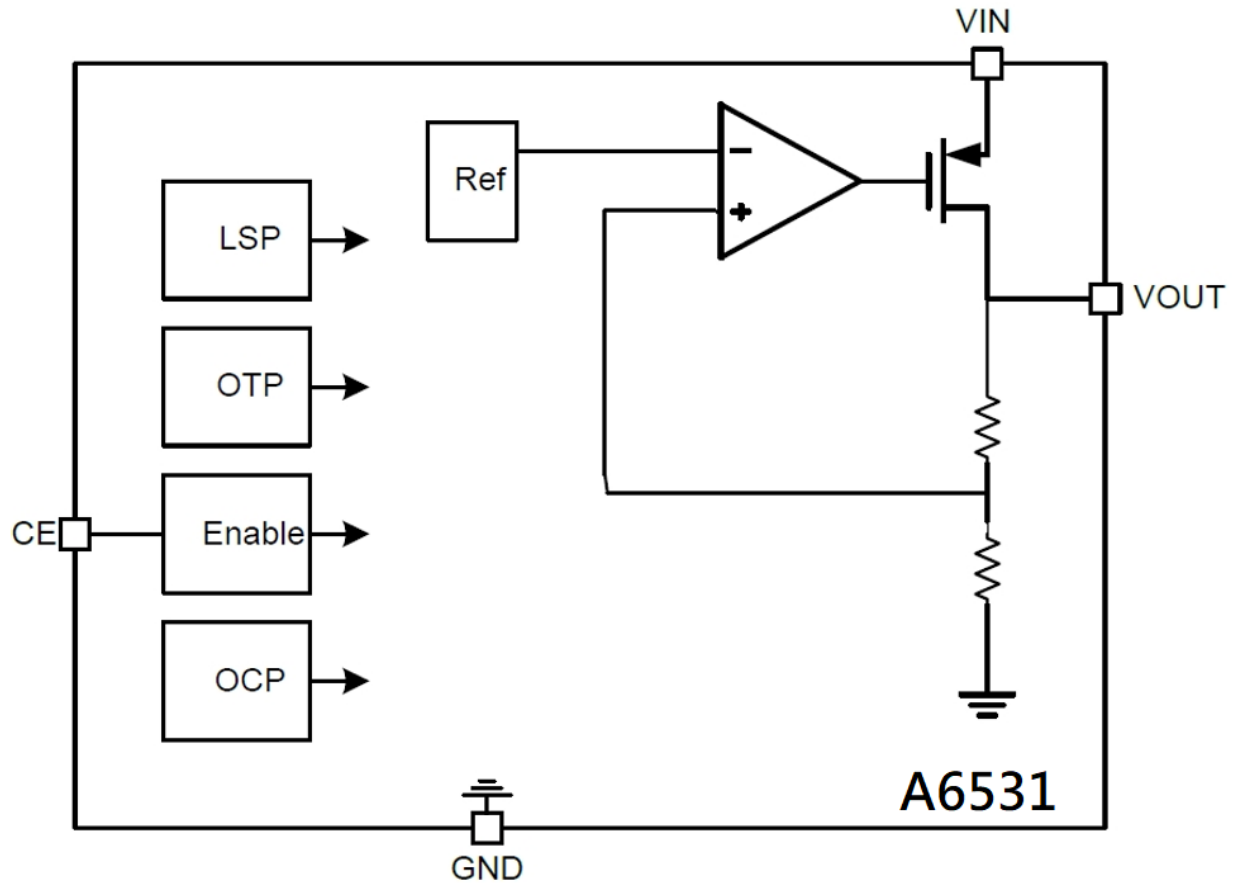
ELECTRICAL CHARACTERISTICS

T_A=25°C unless otherwise noted

Parameter	Symbol	Conditions	Min.	Typ.	Max.	Units
Output voltage	V _{OUT}	V _{IN} =5V, V _{out} =3.3V, I _{OUT} =30 mA	0.98* V _{OUT}	V _{OUT}	1.02* V _{OUT}	mV
Output Current	I _{OUT}	V _{IN} ≥V _{OUT(S)} +1.0 V	-	500	-	mA
Dropout Voltage	V _{drop}	I _{OUT} =50 mA	-	0.12	0.2	V
		I _{OUT} =100 mA	-	0.10	0.45	
Line Regulations	$\frac{\Delta V_{OUT1}}{\Delta V_{IN} \cdot V_{OUT}}$	V _{OUT(S)} +0.5 V ≤ V _{IN} ≤ 6V I _{OUT} =30 mA	-	0.10	0.20	%/V
Load Regulation	ΔV _{OUT2}	V _{IN} =V _{OUT(S)} +1.0 V 1.0 mA ≤ I _{OUT} ≤ 100 mA	-	50	100	mV
Output Voltage Temperature Characteristics	$\frac{\Delta V_{OUT}}{\Delta T_a \cdot V_{OUT}}$	V _{IN} =V _{OUT(S)} +1.0 V, I _{OUT} =10 mA -40°C ≤ T _a ≤ 85°C	-	±100	-	ppm/°C
Supply Current	I _{SS1}	V _{IN} =V _{OUT(S)} +1.0 V	-	5	8	μA
Turn off current	I _{shut}	V _{IN} =5 V, V _{CE} =0	-	-	1	uA
Input Voltage	V _{IN}	-	2	-	30	V
Ripple-Rejection	PSRR	V _{IN} =V _{OUT(S)} +1.0V, f=1kHz V _{rip} =0.5 V _{rms} , I _{OUT} =50mA	-	50	-	dB
Short-circuit Current	I _{short}	V _{IN} =V _{OUT(S)} +1.0 V, ON/OFF=ON, V _{OUT} =0V	-	80	-	mA
CE "High" Voltage	V _{CEH}		1.2	-	-	V
CE "Low" Voltage	V _{CEL}		-		1.0	V
Current limit	I _{LIM}	V _{IN} = V _{OUT(T)} +1V	-	800	-	mA



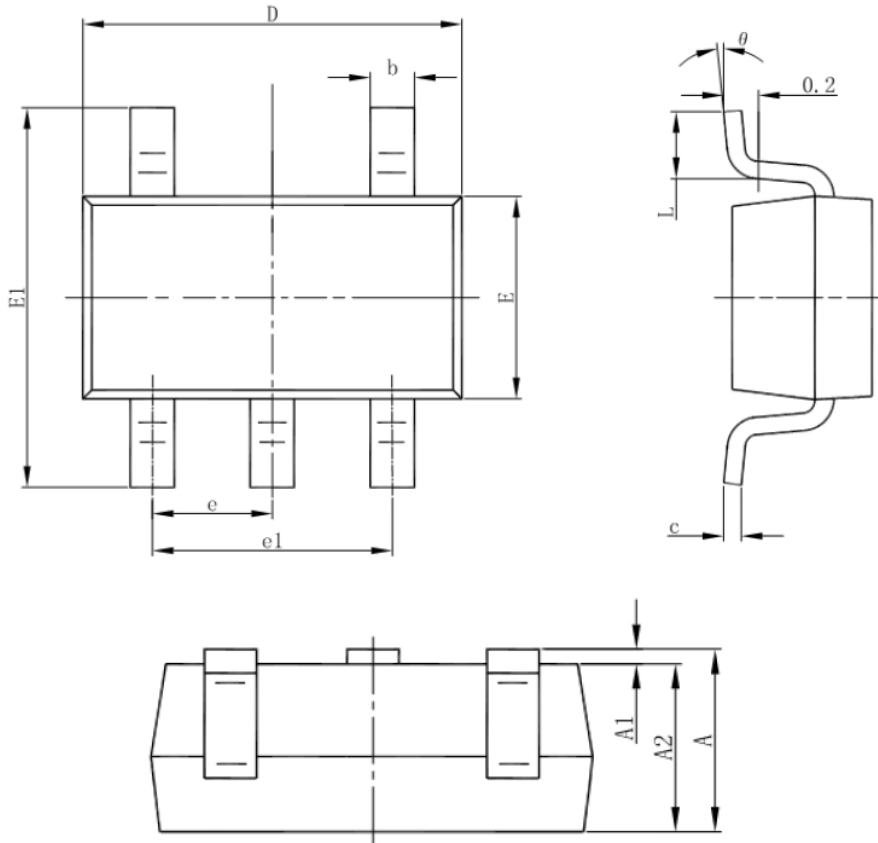
BLOCK DIAGRAM





PACKAGE INFORMATION

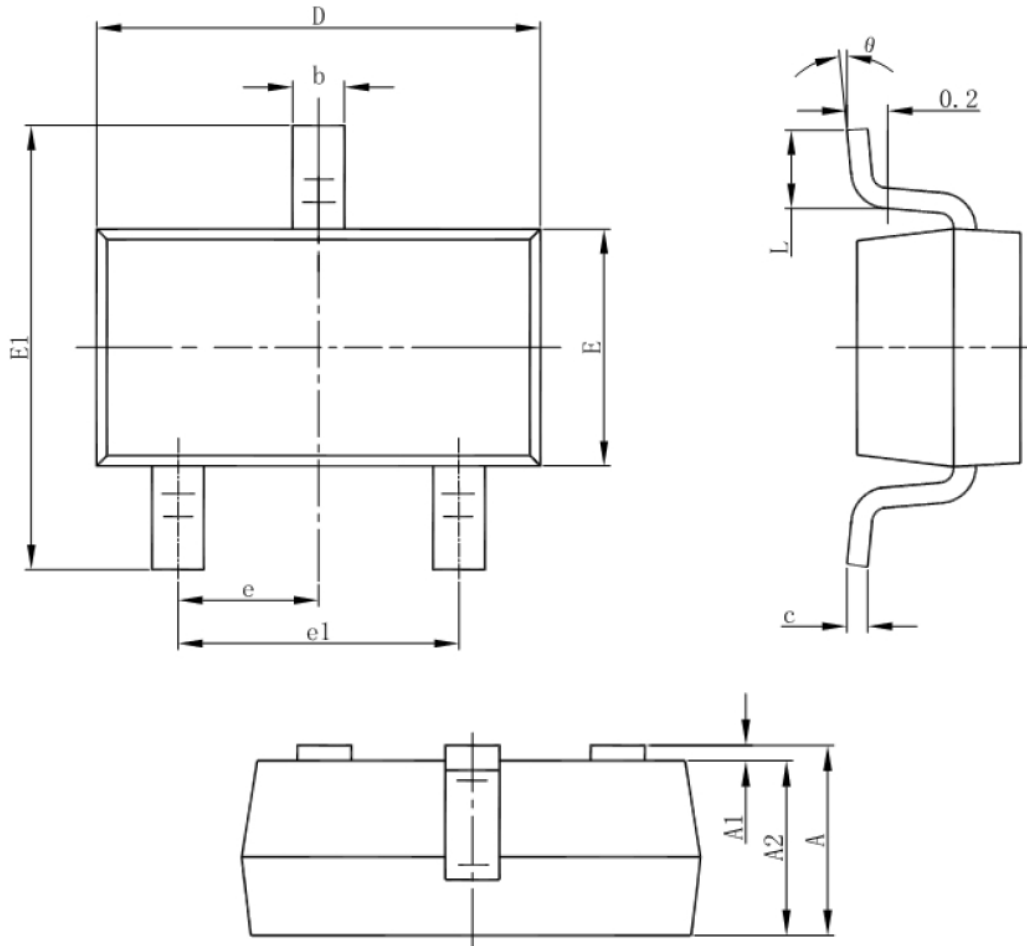
Dimension in SOT-25 (Unit: mm)



Symbol	Min.	Max.
A	1.050	1.250
A1	0.000	0.100
A2	1.050	1.150
b	0.300	0.500
c	0.100	0.200
D	2.820	3.020
E	1.500	1.700
E1	2.650	2.950
e	0.950 BSC	
e1	1.800	2.000
L	0.300	0.600
θ	0°	8°



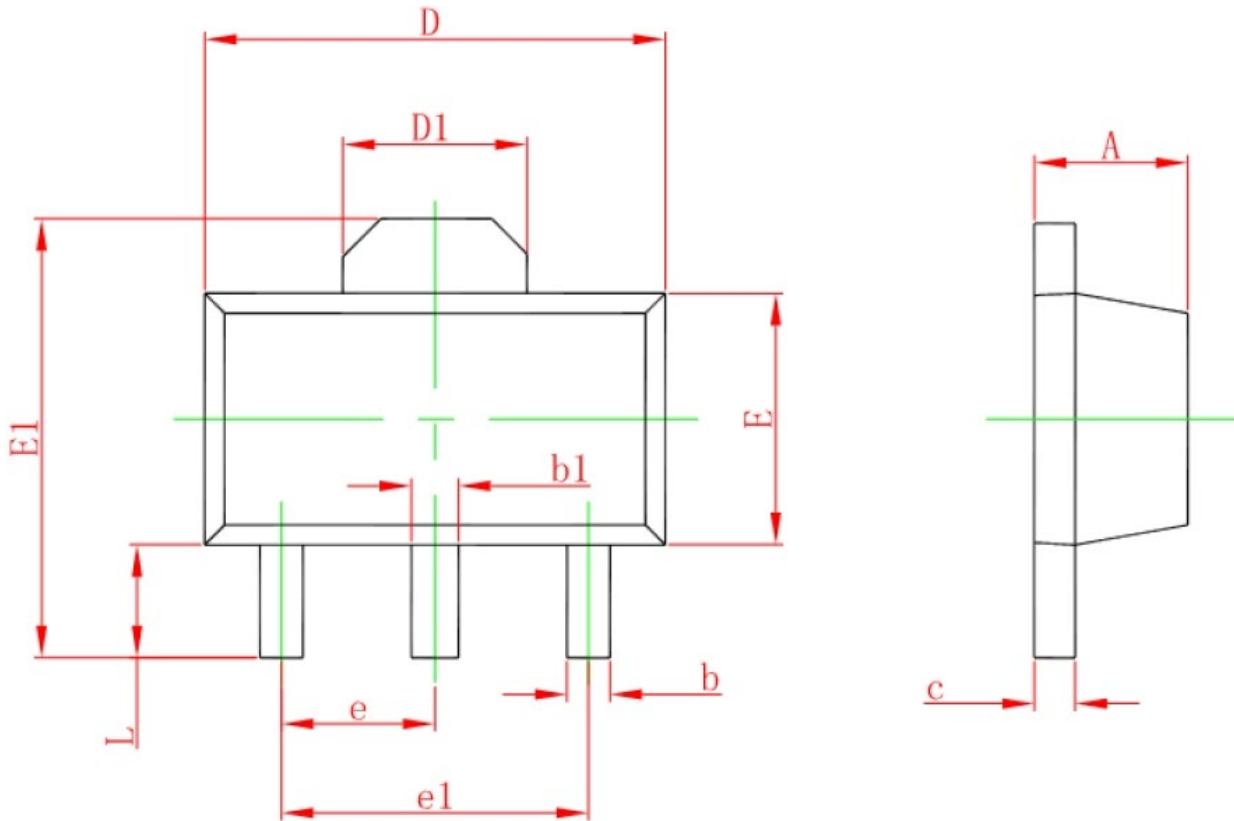
Dimension in SOT-23 (Unit: mm)



Symbol	Min.	Max.
A	1.050	1.250
A1	0.000	0.100
A2	1.050	1.150
b	0.300	0.500
c	0.100	0.200
D	2.820	3.020
E	1.500	1.700
E1	2.650	2.950
e	0.950 BSC	
e1	1.800	2.000
L	0.300	0.600
θ	0°	8°



Dimension in SOT89-3 (Unit: mm)



Symbol	Min.	Max.
A	1.400	1.60
b	0.320	0.520
b1	0.400	0.580
c	0.350	0.440
D	4.400	4.600
D1	1.550 REF	
E	2.300	2.600
E1	3.940	4.250
e	1.500 TYP	
e1	3.000 TYP	
L	0.900	1.200



IMPORTANT NOTICE

AiT Semiconductor Inc. (AiT) reserves the right to make changes to any its product, specifications, to discontinue any integrated circuit product or service without notice, and advises its customers to obtain the latest version of relevant information to verify, before placing orders, that the information being relied on is current.

AiT Semiconductor Inc.'s integrated circuit products are not designed, intended, authorized, or warranted to be suitable for use in life support applications, devices or systems or other critical applications. Use of AiT products in such applications is understood to be fully at the risk of the customer. As used herein may involve potential risks of death, personal injury, or serve property, or environmental damage. In order to minimize risks associated with the customer's applications, the customer should provide adequate design and operating safeguards.

AiT Semiconductor Inc. assumes to no liability to customer product design or application support. AiT warrants the performance of its products of the specifications applicable at the time of sale.