



DESCRIPTION

The 1SS333 & 1SS333T are available in DO-34 and DO-35 Package

FEATURE

- Glass sealed envelope
- High speed
- High reliability

MECHANICAL DATA

- CASE: DO-34 、 DO-35
- High-speed switching
- Polarity: Color band denotes cathode

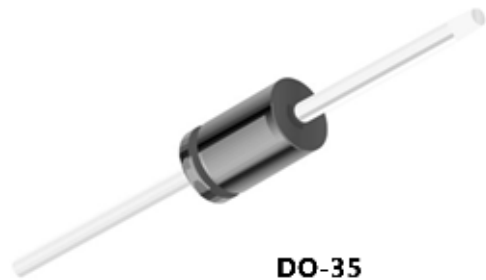
PIN DESCRIPTION

ORDERING INFORMATION

| Package Type | Part Number |
|--|---------------|
| DO-34 | 1SS133 |
| DO-35 | 1SS133T |
| SPQ | 500 pcs / Bag |
| AiT provides all RoHS Compliant Products | |



DO-34



DO-35



**ABSOLUTE MAXIMUM RATINGS**

T_a = 25°C, unless otherwise specified.

| | |
|--|-----------------|
| V _{RM} , Peak Reverse Voltage | 90 V |
| V _R , DC Reverse Voltage | 80 V |
| I _{F(AV)} , Average Rectified Forward Current | 130 mA |
| I _{FM} , Peak Forward Current | 400 mA |
| I _{FSM} , Surge Forward Current at t < 1 s | 600 mA |
| P _{tot} , Power Dissipation | 300 mW |
| T _j , Junction Temperature | 175 °C |
| T _{STG} , Storage Temperature Range | - 65 ~ + 175 °C |

Stresses above may cause permanent damage to the device. These are stress ratings only and functional operation of the device at these or any other conditions beyond those indicated in the Electrical Characteristics are not implied. Exposure to absolute maximum rating conditions for extended periods may affect device reliability.

ELECTRICAL CHARACTERISTICS

T_a = 25°C, unless otherwise specified.

| Parameter | Symbol | Conditions | Max. | Unit |
|-------------------------------|-----------------|---|------|------|
| Forward Voltage | V _F | I _F = 100 mA | 1.2 | V |
| Reverse Current | I _R | V _R = 80 V | 0.5 | μA |
| Capacitance between Terminals | C _T | V _R = 0.5 V, f = MHz | 2 | pF |
| Reverse Recovery Time | t _{rr} | I _F = 10 mA, V _R = 6 V, R _L = 50 Ω | 4 | ns |



TYPICAL CHARACTERISTICS

Fig 1. Forward Characteristics

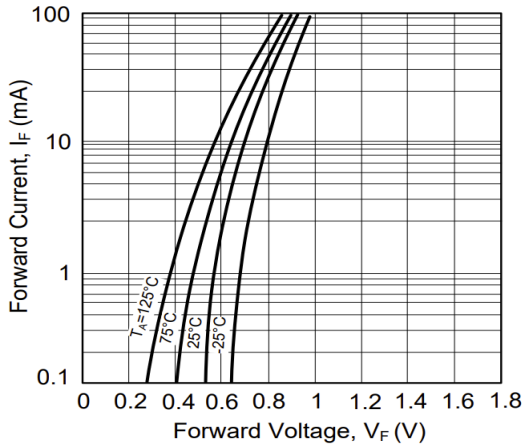


Fig 3. Capacitance Between Terminal Characteristics

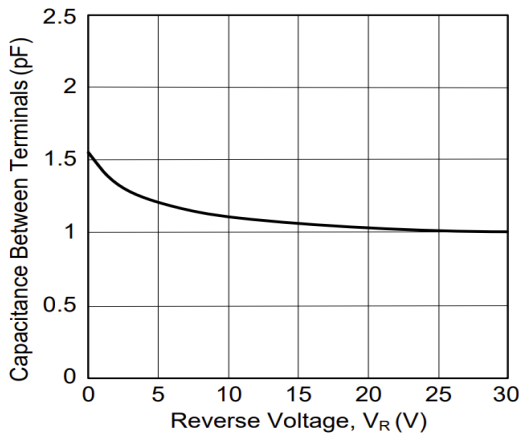


Fig 5. Surge current characteristics

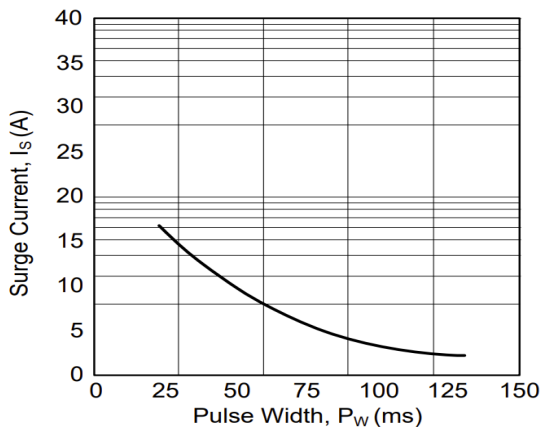


Fig 2. Reverse Characteristics

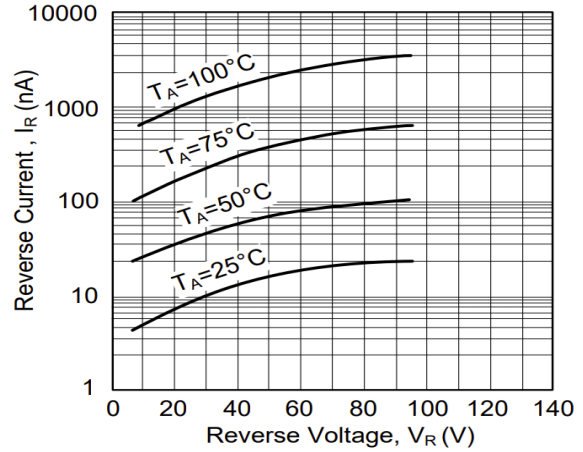


Fig 4. Reverse Recovery Time Characteristics

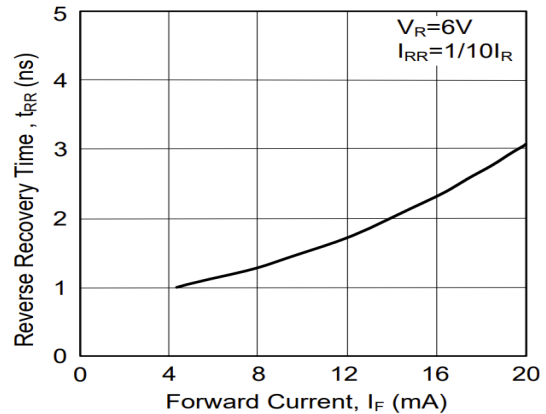
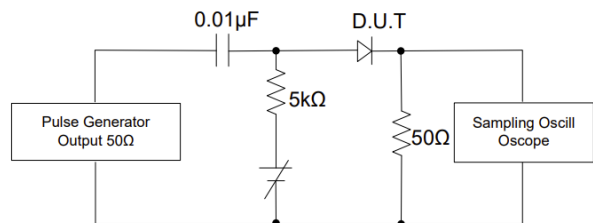


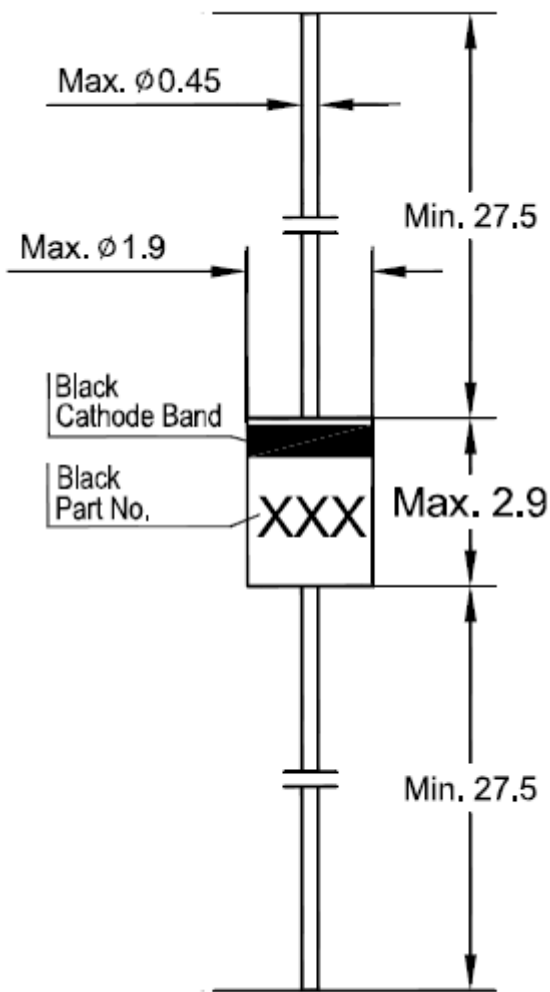
Fig 6. Reverse Recovery Time (t_{rr}) Measurement Circuit



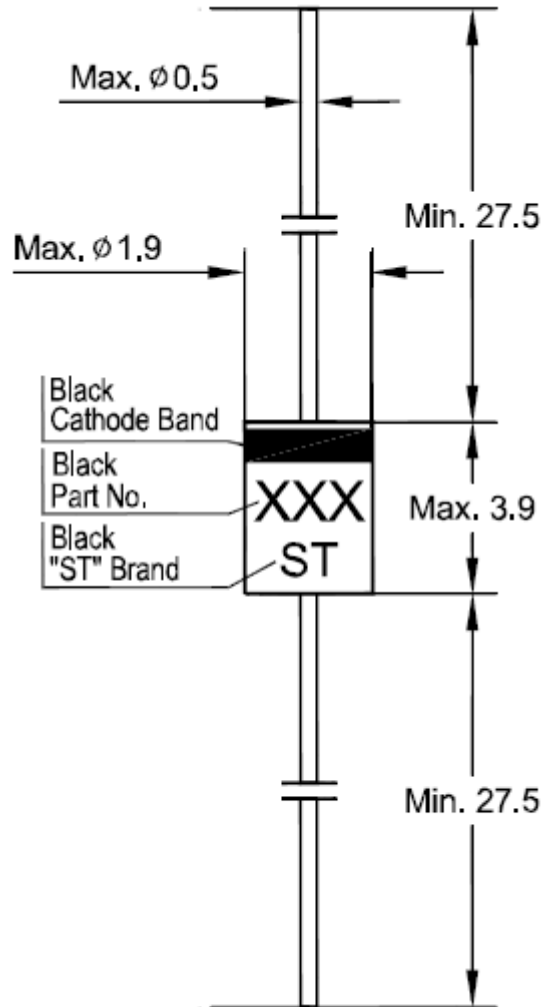


PACKAGE INFORMATION

Dimension in DO-34 Package (Unit: mm)



Dimension in DO-35 Package (Unit: mm)





IMPORTANT NOTICE

AiT Semiconductor Inc. (AiT) reserves the right to make changes to any its product, specifications, to discontinue any integrated circuit product or service without notice, and advises its customers to obtain the latest version of relevant information to verify, before placing orders, that the information being relied on is current.

AiT Semiconductor Inc. integrated circuit products are not designed, intended, authorized, or warranted to be suitable for use in life support applications, devices or systems or other critical applications. Use of AiT products in such applications is understood to be fully at the risk of the customer. As used herein may involve potential risks of death, personal injury, or server property, or environmental damage. In order to minimize risks associated with the customer's applications, the customer should provide adequate design and operating safeguards.

AiT Semiconductor Inc. assumes to no liability to customer product design or application support. AiT warrants the performance of its products of the specifications applicable at the time of sale.