



DESCRIPTION

The 1A1~1A7 are available in R-1 package.

FEATURE

- The plastic package carries Underwriters Laboratory
- Flammability Classification 94V-0
- Glass passivated junction chip
- Low reverse leakage
- High forward surge current capability
- High temperature soldering guaranteed
- 260°C/10 seconds at terminals

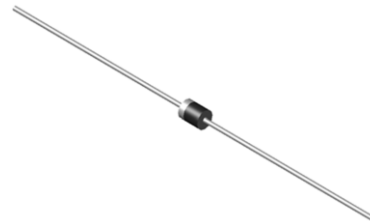
MECHANICAL DATA

- Case: Molded plastic body
- Terminals: Solder plated, solderable per
- MIL-STD-750, Method 2026
- Polarity: Polarity symbol marking on body
- Mounting Position: Any
- Weight: 0.042 ounce, 0.12 grams

PIN DESCRIPTION

ORDERING INFORMATION

Package Type	Part Number
R-1	1A1
	1A2
	1A3
	1A4
	1A5
	1A6
	1A7
Note	SPQ: 1,000pcs/Bulk 5,000pcs/Ammo Pack
AiT provides all RoHS Compliant Products	





ABSOLUTE MAXIMUM RATINGS AND ELECTRICAL CHARACTERISTICS

Ratings at 25°C ambient temperature unless otherwise specified. Single phase, half wave ,60Hz, resistive or inductive load, for capacitive load, derate by 20 %.

Parameter	Symbol	1A1	1A2	1A3	1A4	1A5	1A6	1A7	Unit
Maximum Repetitive Peak Reverse Voltage	V _{RRM}	50	100	200	400	600	800	1000	V
Maximum RMS voltage	V _{RMS}	35	70	140	280	420	560	700	V
Maximum DC Blocking Voltage	V _{DC}	50	100	200	400	600	800	1000	V
Maximum Average Forward Rectified Current at TL = 100 °C	I _{F(AV)}	1							A
Peak Forward Surge Current 8.3 ms Single Half Sine Wave Superimposed on Rated Load	I _{FSM}	30							A
Maximum Instantaneous Forward Voltage Drop Per Leg at 1.0A	V _F	1							V
Maximum DC Reverse Current at Rated DC Blocking Voltage	Ta = 25°C	5							uA
	Ta=125°C	200							
Typical Junction Capacitance*	C _J	21							pF
Typical Thermal Resistance	R _{θJA}	65							°C/W
Operating Junction Temperature Range	T _J	-55 ~ + 150							°C
Storage Temperature Range	T _{STG}	-55 ~ + 150							°C

Stresses above may cause permanent damage to the device. These are stress ratings only and functional operation of the device at these or any other conditions beyond those indicated in the Electrical Characteristics are not implied. Exposure to absolute maximum rating conditions for extended periods may affect device reliability.

*Measured at 1MHz and applied reverse voltage of 4.0V D.C.



TYPICAL PERFORMANCE CHARACTERISTICS

Fig 1. Derating Curve Output Rectified Current

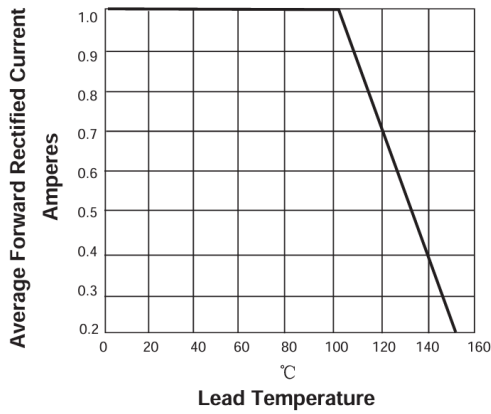


Fig 2. Maximum Non-Repetitive Peak Forward Surge Current per leg

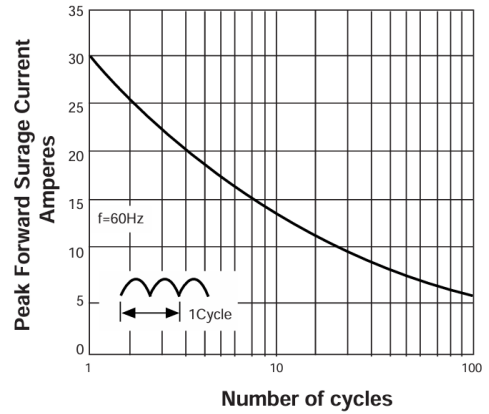


Fig 3. Typical Forward Voltage Characteristics

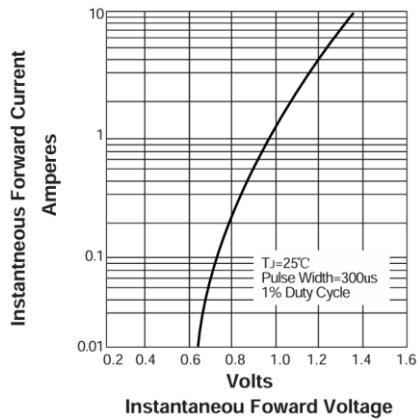
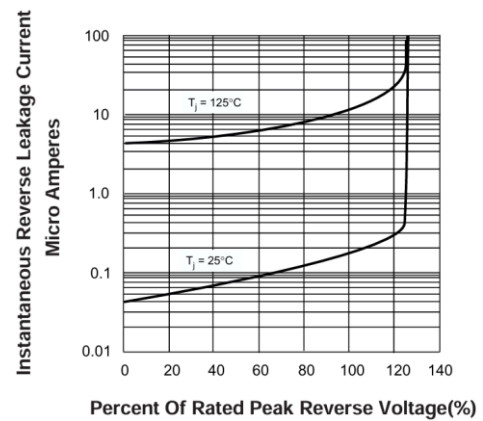


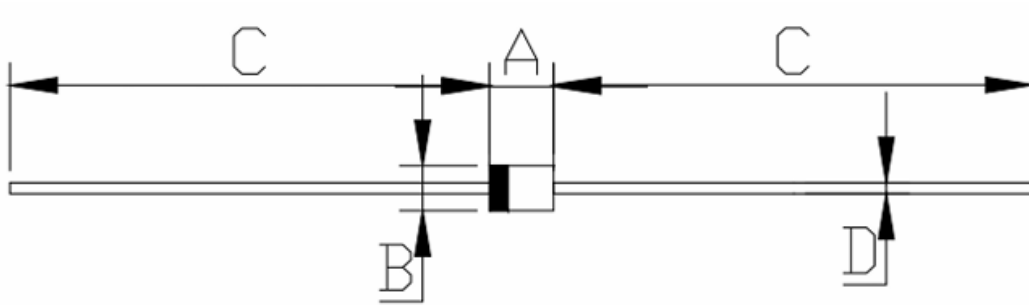
Fig 4. Typical Reverse Leakage Characteristics





PACKAGE INFORMATION

Dimension in R-1 Package (Unit: mm)



SYMBOL	MILLIMETERS	
	Min.	Max.
A	3.000	3.300
B	2.000	2.700
C	25.400	-
D	0.530	0.640



IMPORTANT NOTICE

AiT Semiconductor Inc. (AiT) reserves the right to make changes to any its product, specifications, to discontinue any integrated circuit product or service without notice, and advises its customers to obtain the latest version of relevant information to verify, before placing orders, that the information being relied on is current.

AiT Semiconductor Inc. integrated circuit products are not designed, intended, authorized, or warranted to be suitable for use in life support applications, devices or systems or other critical applications. Use of AiT products in such applications is understood to be fully at the risk of the customer. As used herein may involve potential risks of death, personal injury, or server property, or environmental damage. In order to minimize risks associated with the customer's applications, the customer should provide adequate design and operating safeguards.

AiT Semiconductor Inc. assumes to no liability to customer product design or application support. AiT warrants the performance of its products of the specifications applicable at the time of sale.